




MARVEL AFRICA
HUNTING SAFARIS
South Africa

EXPLORE . DREAM . DISCOVER

WWW.MARVELAFRICA.COM

SOUTH AFRICA, LIMPOPO PROVINCE



Marvel Africa Hunting Safaris is a premier luxury hunting and safari company located in the heart of Africa's magnificent wilderness. Specializing in providing an exclusive and private experience for its esteemed guests, this safari company offers a truly unique and personalized adventure tailored to the individual desires and preferences of each client.

The luxury tented camp accommodates up to 8 guests sharing, ensuring intimacy and exclusivity. Each tent is equipped with an en-suite bathroom featuring hot running water, a stocked bar fridge with bottled water, a complimentary coffee station, air conditioning, and a TV for added comfort.



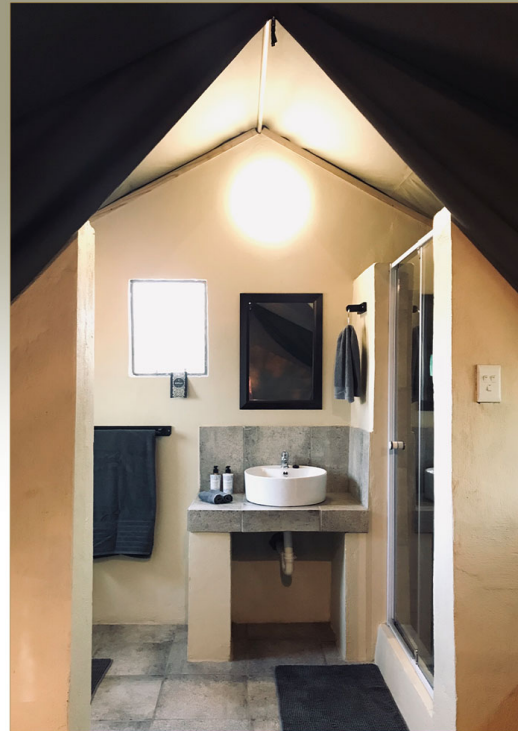
LUXURY TENTED ACCOMMODATION



MARVEL AFRICA
HUNTING SAFARIS
South Africa

Marvel Africa Hunting Safaris invites you to experience the perfect blend of comfort and immersion in nature at their en-suite air-conditioned tented camp, nestled in the captivating Limpopo province of South Africa. Here, they offer a haven where you can truly connect with the wilderness without compromising on the quality and comfort you deserve.

When you step into your tented camp, you'll be greeted by a serene and inviting atmosphere. Each tent is thoughtfully designed to provide a luxurious retreat amidst nature's beauty. The en-suite bathrooms offer modern conveniences, ensuring privacy and comfort. And with air conditioning, you can escape the African heat and enjoy a cool and refreshing environment after your exciting adventures.



LUXURY TENTED ACCOMMODATION



Marvel Africa Safaris lodge, nestled in the heart of the African bush, provides all modern-day amenities for a luxurious stay. Guests can enjoy an open bar, a relaxing steam room, and a refreshing swimming pool. The lodge also features a boma, perfect for unwinding around the fire after a day's hunt, an outdoor dining area for al fresco meals, and a small curio store offering unique souvenirs.



MARVEL AFRICA LODGE



Whether you're seeking a quiet escape, embarking on a thrilling hunting expedition, or capturing breathtaking wildlife photographs, Marvel Africa Hunting Safaris offers a haven where you can retreat after each day's adventures. Unwind in the tranquility of your tented camp, surrounded by the beauty of the African wilderness, knowing that your comfort and satisfaction are their utmost priority.



MARVEL AFRICA LODGE



Marvel Africa offers a delightful culinary experience, beginning each day with freshly brewed coffee, muffins, cereals, yogurts, and a hearty English breakfast. Lunch is either served in camp or packed for convenience, and guests can enjoy a bush braai, a client favorite. Dinner is personalized, with guests choosing from a menu that caters to their tastes and preferences, including options for those with food allergies or specific dietary needs.



MARVEL FARMS KITCHEN



Marvel Africa offers a delightful culinary experience, beginning each day with freshly brewed coffee, muffins, cereals, yogurts, and a hearty English breakfast. Lunch is either served in camp or packed for convenience, and guests can enjoy a bush braai, a client favorite. Dinner is personalized, with guests choosing from a menu that caters to their tastes and preferences, including options for those with food allergies or specific dietary needs.



MARVEL FARMS KITCHEN



LODGE RATES 2025

Arrival & Departure Days – Per Person: \$400 USD

** This service is required*

INCLUDES:

- Day of Arrival – \$200 per/person:

Transport from OR Tambo International Airport in Johannesburg to Marvel Africa Safaris Lodge where we will be waiting for you around the campfire with hearty snack platters & drinks. A representative of Marvel Africa Safaris will meet you at the airport. After you have collected your rifles/bows and luggage you will be transferred to our lodge.)

- Day of Departure – \$200 per/person:

Breakfast in camp and from there depart to OR Tambo International Airport in Johannesburg

- On the Road: Bottled water & non-alcoholic drinks/snacks on the road

- Transport: Air-conditioned bus or 4x4 truck, depending on group size

- Other Costs: Gas, Toll Gate Fees, Daily fee for a Marvel Africa Safaris representative

EXCLUDES:

- Overnight stay at a hotel/guesthouse/lodge before departure to Marvel Africa Safaris Lodge

- Extra activities & stops on the road – unless otherwise arranged and time allows

- Personal spending at the gas station's stores when we need to fill-up on gas

- Meals on the road/Restaurant stops

Lodge Rate - Per Person / Per Day: \$180 USD

** This rate is for Hunters & Non-Hunters*

INCLUDES:

- Full board Accommodation: All meals (Breakfast, Lunch or Lunch-packs, Dinner & Dessert) prepared by kitchen staff

- Beverages: Juice, Bottled water, Soda's

- Liquor: OPEN BAR – what's available in the bar is available to our clients

- Lodging Services: Daily laundry, Daily room cleaning & Daily lodge cleaning service

EXCLUDES:

- Airline Tickets

- Lodging incurred before and/or after the contracted period of your safari.

- Alcoholic beverages not available in our bar – on request and will be charged separately

- Arrival & Departure Days

- Air charters during your stay (depending on the nature of your safari)

- Gratuities/Tips to staff

- Meals & Drinks at Restaurants/Bars/Pubs should you wish to experience a night-out.

- Day Trips/Activities/Side-Tours

Please Note:

Professional Services for Hunters Excluded - Please Refer to our Hunting Information Booklet.



MARVEL AFRICA PRICELIST 2025 - USD

African Civet	\$1750	*excl. permit	Kudu Greater - 58" +	P.O.R
African Wildcat	\$800	*excl. permit	Lechwe Common	\$4250 *excl.permit
Baboon	\$450	*excl. permit	Lion Male	P.O.R *excl.permit
Blesbuck Common	\$900		Lioness	P.O.R *excl.permit
Blesbuck White	\$1800		Mountain Reedbuck	\$1950
Brown Hyena	\$3250	*excl. permit	Nyala	\$3800
Bushbuck	\$2300		Ostrich	\$1550
Bushpig	\$2150		Porcupine	\$400
Caracal	\$2750	*excl. permit	Red Hartebeest	\$2500
Cape Buffalo - up to 39"	\$12500		Roan Antelope	\$7750 *excl. permit
Cape Buffalo - up to 41"	\$14500		Sable Antelope - up to 40"	\$5555
Crocodile - up to 11ft	\$9500	*excl. permit	Sable Antelope - up to 45"	\$7500
Duiker Common	\$800		Springbuck Common	\$1000
Eland Cape	\$5250		Springbuck Copper	\$1350
Gemsbuck	\$2500		Springbuck Black	\$1750
Genet	\$850		Springbuck White	\$1950
Giraffe	\$4750		Steenbuck	\$800
Hippo	\$11500	*excl. permit	Tsessebe	\$3750 *excl.permit
Impala Common	\$800		Vervet Monkey	\$350 *excl.permit
Impala Black	\$2750		Waterbuck	\$3600
Jackal Black Backed	\$350		Warthog	\$750
Klipspringer	\$2200		Wildebeest blue	\$2250
Kudu Greater - up to 54"	\$4500		Wildebeest Golden	\$3750
Kudu Greater - 54" - 58"	\$8240		Wildebeest Black	\$2250
			Zebra Burchell's	\$1700

LODGE RATES & PROFESSIONAL SERVICES 2025 - USD

- * Arrival day per guest: \$200
- * Departure day per guest: \$200
(Arrival & Departure Day's includes Airport Transfers - This service is required)
- * Lodge Rate per guest: \$180 per day (All Inclusive Accommodation, Meals, Open Bar)
(Lodge Rates applies to Hunters and Non-Hunters/Observers)
- * Professional Service: 1x Hunter | 1x Professional Hunter: \$150 per hunter per day
- * Professional Service: 2x Hunters | 1x Professional Hunter: \$75 per hunter per day
- * Professional Service: Dangerous Game: \$250 per hunter per day
(Services of a Professional Hunter is required by law for all hunters)

OTHER SERVICES 2025 - USD

- * Rifle Rent per day: \$40
- * Ammunition: \$80 per box

Visit our website to see our non-hunting activities
www.marvelafrica.com



MARVEL AFRICA
HUNTING SAFARIS
South Africa

EXPLORE , DREAM , DISCOVER